

EDG BIKE SHARE PROGRAM

ENVIRONMENTAL DESIGN GROUP BIKE SHARE PROGRAM

Get moving. Get some fresh air. Go green.

Environmental Design Group strives to incorporate sustainability and good health choices into our daily routines, and our bike share program is no exception. Employees can use a completely emission free form of transportation, which improves air quality and reduces pollution. Biking reduces traffic congestion, saves gas, creates a sense of place and community, and contributes to the overall wellness of our employees by promoting healthy activity. Watch our *community impact people* as they green their routine to pedal their way to a healthier, more sustainable lifestyle.

What does this mean and how does it impact me?

SOCIAL BENEFITS THROUGH BICYCLING CULTURE

Supporting a culture that sees cycling as a preferred transportation choice, and a community that respects and works with the different transportation options.

RESEARCH OPPORTUNITIES

Provides the potential for research in urban planning, trail development, community health, marketing, environment, engineering and more.

CONVENIENCE FACTOR

Providing efficient transportation choices to aid users in arriving at destinations quickly and safely.

HEALTH THROUGH INCREASED PHYSICAL ACTIVITY

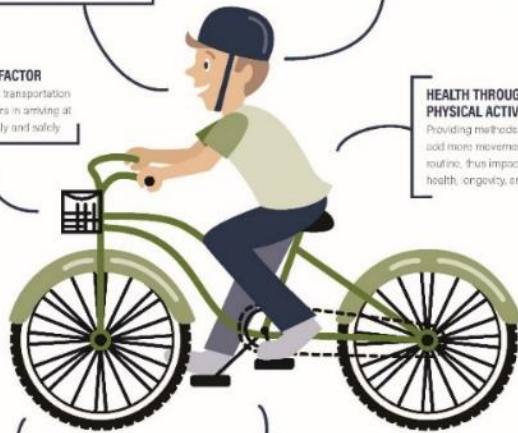
Providing methods for employees to add more movement into their daily routine, thus impacting alertness, health, longevity, and more.

MOBILITY FOR EMPLOYEES

Providing transportation options that assist staff to conduct their duties and responsibilities in an efficient, environmentally friendly manner.

ENVIRONMENTAL BENEFITS OF REDUCING CARBON FOOTPRINT

Reducing greenhouse-gas emissions and improving environmental impact.



- **Sponsoring Organization:**

Environmental Design Group Health and Wellness Program

- **Type:**

- Health & fitness
- Education & safety

- **Description:** Environmental Design

Group strives to incorporate sustainability and good health choices into our daily routines, and our bike share program is no exception. Employees can use a completely emission free form of transportation, which improves air quality and reduces pollution

- **Year Started:** 2016

County: Summit





EDG - BIKE SHARE PROGRAM



- **Participants:** Environmental Design Group Employees
- **Location:** Environmental Design Group, Akron Office
- **Program frequency:** Used on a daily basis

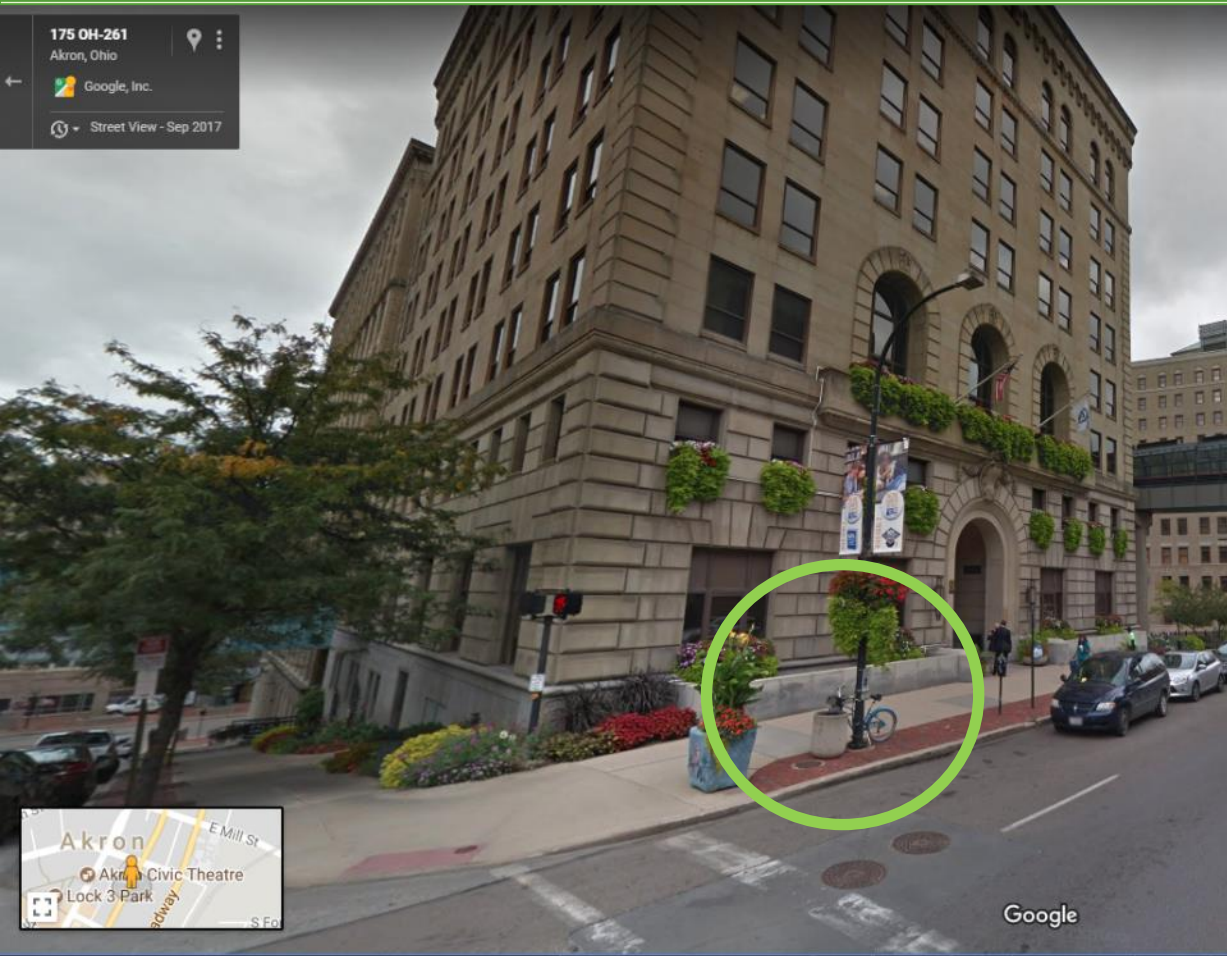
County: Summit

EDG - BIKE SHARE PROGRAM



- **Benefits, Goals and Results:** Engineers and Designers have used the bikes to explore project grounds before and after construction for a better understanding of functionality.
- **Transferability:** This program is incredibly simple and relatively affordable for a company to adopt. Simple equipment, a reservation system, and a Champion are really all you need.

EDG - BIKE SHARE PROGRAM



- An EDG sharebike was spotted on google streetview. Our employees regularly use the bikes as an economical and quick transportation mean for meetings with the City of Akron.

County: Summit



EDG - BIKE SHARE PROGRAM



- “Let’s start a bikeshare program!”